

2014 R4 RAFTING **WORLD CHAMPIONSHIP**



World Championship R4 Rafting Foz do Iguassu-Brazil September 08th to 19th



Where the canoeing grows fast. Come together

2014 R4 RAFTING WORLD CHAMPIONSHIP

BULLETIN #1- FEBRUARY 2014

Sumário

| | |
|---|----|
| 1. WELCOME LETTER | 4 |
| 2. ORGANIZATION COMMITTEE | 5 |
| 3. TRAINING SESSIONS BEFORE THE OFFICIAL PERIOD..... | 6 |
| 4. ENTRIES..... | 7 |
| 5. STANDARDIZATION..... | 8 |
| 6. PROVISIONAL COMPETITION SCHEDULE..... | 9 |
| 7. THE CITY OF FOZ DO IGUASSU..... | 10 |
| 8. ACCESS TO FOZ DO IGUASSU..... | 11 |
| 9. VENUE: ITAIPU CANAL AND HYDROELECTRIC ITAIPU..... | 12 |
| 10. VISA INFORMATION..... | 16 |
| 11. ACCOMMODATION, MEALS, LOCAL TRANSPORT, AIR TRANSPORT AND INSURANCE..... | 17 |
| 12. CONTACT..... | 20 |
| 13. ORGANIZATION, SPONSORS, OFFICIAL AIRLINE AND SUPPORT..... | 21 |

2014 R4 RAFTING WORLD CHAMPIONSHIP

1. WELCOME LETTER

It is with great satisfaction that the Brazilian Canoe Confederation, Itaipu and International Rafting Federation invite national and international to join the World Rafting Championship R4, to be held in the city of Foz do Iguassu from October 08 to 19, 2014.

The stage to be used for this great event could not be more splendid than the gorgeous scenery of Iguassu Falls, in Iguassu National Park and masterful Itaipu, which is installed on the Itaipu Canal, the only Latin American to practice Canoeing and Rafting. In Foz do Iguassu the best rafting in the world receives infrastructure and responsiveness comparable to the major global events.

It is clear, however, that the scenarios where competitions will be held are conservation areas and of national security and, therefore, Brazilian law is very rigid regarding strong flow of public in strategic locations. Under this legal system, the Organizing Committee will be required to be very clear and precise about the information that refers to the number of expected participants and guests to the event.

In possession of such information, a Strategic Security Planning and Locomotion will be structured along with the Brazilian authorities for all stakeholders at local competition, so that the organization asks that teams choose at hotels in the central area of the city to facilitate the transport service. Access, mainly in the Iguassu National Park, will be restricted to members of the teams and no entries will be accepted after the deadline.

The Brazilian Canoe Confederation and Paranaense Canoe Federation have held three national events and the Pan American Rafting Championship 2010, which served as tests to house extremely solid and effectively R4 World Rafting Championship 2014. These events have generated fantastic images that can be found at the following address <http://canoagem.org.br/rafting2008>.

Besides the beautiful images that were transmitted in the most important TV channel in Brazil, Foz do Iguassu has several websites specialized in tourism because it is one of the most visited sites on the planet. A major tourist infrastructure will help to transform the location of the destination rafting in 2014. Find more information of this magnificent corner of the world in the website www.fozdoiguacu Destinodomundo.com.br.

Welcome everyone to the Iguacu Falls and Itaipu, the largest power generator in the world. We hope all of you for the opening ceremony to take place on 08 October, at 19pm, at Itaipu.

João Tomasini Schwertner
President of the Brazilian Canoe Confederation

2014 R4 RAFTING **WORLD CHAMPIONSHIP**

2. ORGANIZATION COMMITTEE

IRF Organizing Committee

Event Director and Race Director – André Luiz Behs

Safety Director – Massimo Desiati

Brazilian Organizing Committee

Sports Coordination - Denilson de Lima – panaguas222@hotmail.com

Structural Coordination - Argos Rodrigues – argos.rodrigues@canoagem.org.br

Safety Coordination - João Emerson Kondo – atoca_canoagem@yahoo.com.br

Timing and result - Carlos Pedrosa – carlos.pedrosa@canoagem.org.br

Ceremonial Coordination - Mayara Cordeiro - maya.imel@outlook.com

Central Office Information

Julierton – julierton_ma@hotmail.com – phone 45 9932 6662 / 45 3027 2052

Operational Manager and coordinator transportation and accommodation

Gilson Proença – gpkturismo@uol.com.br – phone (55) 42 3232 5042 / (55) 42 9937 8251

2014 R4 RAFTING WORLD CHAMPIONSHIP

3. TRAINING SESSIONS BEFORE THE OFFICIAL PERIOD

The official training begins on October 8th. Teams that wish to train in Itaipu Canal or in the Iguassu National Park, where the evidence will take place downriver, will have to follow the following procedures:

1º - Officially Report by email the period you want to train to the following email: foz2014@canoagem.org.br ;

2º- Require password to access the credentialing system and provide all the needed information and photos of members;

3º- Forward email scheduling required training;

4º- Bring their equipment for training. Competition materials are still being made and **will not be loaned outside the period of the official training**;

5º- The training in the Iguassu National Park outside the official schedule will be possible since the team hits the details and prices directly with the Macuco Safari Company through the site: www.macucosafari.com.br. The person responsible for organizing the training is Christofer. The phone is +055 45 9967 4269, email comercial@macucosafari.com.br

6º- The cost to train in the Itaipu Canal is only RS 50.00 **per person / per day** to pay the **mandatory insurance**. The training will be defined to separate the Brazilian National Canoeing schedules;

7º- Out of the official training period, there won't be shipping by local organizers, each team must place its car and pass the document data so the access credential for the vehicle is provided in Itaipu;

8º- All equipment should be disinfected upon arrival and when withdrawn for return shipment of the teams;

9º- Pumping facilities are provided in the Itaipu Canal from the beginning of October, and **cannot guarantee enough water for early training period if long drought across the Paraná River Basin**.

2014 R4 RAFTING **WORLD CHAMPIONSHIP**

4. ENTRIES

Deadline: The event will be held in two locations of rare beauty, but inserted in conservation areas and National Security, which require very strict access rules and bureaucratic.

To be able to meet the deadlines established for organizing access all participants, the deadline of the entries will be:

- July 30, 2014 – numerical entries
- August 30, 2014 – nominal entries

Entry fee: US\$ 100,00 (American dollar) per person

Included in the entry fee:

- **Transport to the City/Itaipu Canal/City every day– during October 08 to 19, 2014;**
- **Transport to the airport/hotel/airport since given 15 days in advance;**
- **Transport to the City/Iguassu National Park/City – official time;**
- **Transport to the City/Binational Itaipu/City – Opening Ceremony in October 08, 2014, at 19pm;**
- **Closing dinner;**
- **Transport to the City/Ono Theatre Bar – Opening Ceremony – General awards;**
- **Health Insurance in Foz;**
- **Access to Itaipu Canal and Iguassu National Park in the officials days;**

Official website for entries: www.foz2014.org.br

Official system of entries:

<http://extranet.canoagem.org.br/associacoesauth?evento=rafting2014>

To access the site of the entries send us an email registered in ICF for foz2014@canoagem.org.br and request your password. The validation of the emails will be starting the emails registered on ICF website.

2014 R4 RAFTING

WORLD CHAMPIONSHIP

5. STANDARDIZATION

According to the official rules, life jacket, helmet e rescue cable must be standardized, beginning at the moment of the equipment disinfection. Athletes or teams that participate without the seal of the survey will be automatically disqualified.

BOATS:

Even being a R4 competition, the IRF preferred the downriver to happen with 14 feet boats for all categories and the others with 12 feet boats. This size increased the number of boats in the event, facilitating the organization logistic and making the competition safer.

The boats are Itaipu Binational property, and they will be alternated among the teams during the competition, so nobody is authorized to change the shaping or structure of the boats.

LIFE JACKET, HELMES, SHOES AND PADDLES:

All participants must use obligatorily the following equipment: life jacket with minimum 6.12kg for 60N buoyancy, helmet with buckle, shoes and paddles.

CABLE RESCUE

The boat must be present, at least one coupled with 15 meters (minimum) and fixed cable around cable redemption, and leave free the stern and the bow.

The event will follow the rules of IRF Competition.

2014 R4 RAFTING WORLD CHAMPIONSHIP

6. PROVISIONAL COMPETITION SCHEDULE

Provisional Schedule World Cup 2014

**** Final schedule only after the closing date of entries

| DAY | TIME | EVENT | VENUE |
|-------|----------------------------------|--|--|
| 08/10 | 8h à 11h30 13h30 à 17h 19h | <ul style="list-style-type: none"> • Free Training SPRINT and SLALOM- Youth and Junior • Opening Ceremony | Itaipu Canal Itaipu Hydroelectric |
| 09/10 | 8h à 11h30 13h30 à 17h | <ul style="list-style-type: none"> • Training at Iguassu River YOUTH and JUNIORS • Slalom Training | Iguassu National Park Itaipu Canal |
| 10/10 | 8h à 16h 16h30 | <ul style="list-style-type: none"> • Competition SPRINT and HEAD to HEAD- youth/junior • Medal Presentation | Itaipu Canal |
| 11/10 | 8h à 16h 16h30 | <ul style="list-style-type: none"> • Competition SLALOM- youth/junior • Medal Presentation | Itaipu Canal |
| 12/10 | 8h à 12h 13h | <ul style="list-style-type: none"> • Competition DOWNRIVER- youth/junior • Medal Presentation | Iguassu National Park |
| 13/10 | 8h à 11h30 13h30 à 17h | <ul style="list-style-type: none"> • Free Training SPRINT and HEAD to HEAD - Open e Master | Itaipu Canal |
| 14/10 | 8h à 11h30 13h30 à 17h | <ul style="list-style-type: none"> • Free Training SLALOM- Open e Master | Itaipu Canal |
| 15/10 | 8h à 11h30 | <ul style="list-style-type: none"> • Training at Iguassu River Senior and Master | Iguassu National Park |
| 16/10 | 8h à 11h30 13h30 à 17h | <ul style="list-style-type: none"> • Competition SPRINT - Open e Master • Medal Presentation | Itaipu Canal |
| 17/10 | 8h à 11h30 13h30 à 17h | <ul style="list-style-type: none"> • Competition HEAD to HEAD- Open e Master • Medal Presentation | Itaipu Canal |
| 18/10 | 8h à 16h 16h30 | <ul style="list-style-type: none"> • Competition SLALOM- Open e Master • Medal Presentation | Itaipu Canal |
| 19/10 | 8h à 16h 16h30 | <ul style="list-style-type: none"> • Competition DOWNRIVER- Open e Master • Medal Presentation • Closing Presentation | Iguassu National Park Ono Theatre Bar |

2014 R4 RAFTING WORLD CHAMPIONSHIP

Open (16+) – Master (40+) – Youth (Under 19) – Junior (Under 23)

7. THE CITY OF FOZ DO IGUASSU

Foz do Iguassu has attracted visitors since the first European explorer found the area around the year 1540. During the year 1930, over 1 million acres in the Brazilian side were turned into a national park, and in 1985 the falls were designated a World Heritage Site UNESCO.

Foz do Iguassu is located southwest of the state of Paraná, near the borders of Paraguay and Argentina. Foz do Iguassu is located in the Paraná River near its confluence with the Iguassu River. It is connected by a paved east and west to the Paraguayan city of Ciudad del Este road through the Friendship Bridge. The city also has an international airport. Most of the local economy is based on tourism. The main attraction is the spectacular Iguassu Falls, in Iguassu River located about 24 kilometers (about 15 miles) north of its junction with the Paraná. The falls are shaped like a horseshoe approximately 4 kilometers (about 2.5 mi) in width, between 60 and 80 m (about 197-262 ft) tall.

The falls are upstream in this river, a distance of 28km from downtown. Downtown is small and easy to transport, but offers few attractions. North of downtown, the BR-277 connects Curitiba and São Paulo and runs the Friendship Bridge to Paraguay. South of downtown, Cataratas Avenue (BR-469) heads towards southeast towards the Iguassu National Park and Falls. There are some good hotels and other attractions and restaurants along this road. Approximately 7km (4 1/4 mile) from the center, there is an exit to the Tancredo Neves Bridge, which crosses the river to Argentina. Public buses do this route, and the customs formalities are minimal. The road to the falls, now called the Cataratas Highway, continues after leaving for the airport until at 17km (11 miles) from the city, it reaches the gates of the National Park of Iguassu.

The information center of Foz do Iguassu tourism has employs who attendants fluent English language. They also provide free city maps. The main tourist information center is located at Getúlio Vargas Square (JK Street and Rio Branco Avenue) (phone. 55 45 3521-1125; www.fozdoiguacu.pr.gov.br, Open Late - Friday 9am-5pm). There is also information booths desk at the airport and bus station, or you can call the Information Service Desk (Teletur - phone 0800/451-516 free within Brazil.). The service operates daily from 7am to 11pm.



2014 R4 RAFTING WORLD CHAMPIONSHIP

8. ACCESS TO FOZ DO IGUASSU

Foz do Iguacu / Cataratas-IGU International Airport: The airport is located on BR 469 - km 16.5 - the Cataratas Highway, 13 km from downtown, 12 km from Iguassu Falls, 10 km from Tancredo Neves Bridge (Argentina), 20 km from the Friendship Bridge (Paraguay), 30 km from the Itaipu dam. There is also the possibility of the arrival airport AGT - Guarani International Airport in Ciudad del Este (Paraguay) or IGR - Iguassu Falls International Airport in Puerto Iguassu (Argentina).

For more information about the Foz do Iguacu International Airport visit: <http://www.infraero.gov.br/index.php/br/aeroportos/parana/aeroporto-internacional-de-foz-do-iguacu.html>

Highways: Arriving to Foz do Iguassu by car or bus is easy, because Brazilian, Argentines and Paraguayans highways supply it. In Brazil, you can arrive through BR-277. It's an highway with toll and pass across all Parana state. Just like the airports, the region has three bus stations with regional lines, national e international, which connect the main cities in Brazil with Paraguay and Argentina.

Access to the venue: The transport until the competition will be done by car or bus. Foz do Iguassu downtown is 17 km from Itaipu, approximately 20 minutes and 28 km from Iguassu National Park, approximately 30 minutes.



For a better look at the map visit:

<http://mapasblog.blogspot.com.br/2011/02/mapas-de-foz-do-iguacu-pr.html>

2014 R4 RAFTING WORLD CHAMPIONSHIP

9. VENUE: ITAIPU CANAL AND HYDROELECTRIC ITAIPU

Itaipu Canal



Itaipu Canal is part of the Piracema Park Complex, built to make possible the fishes' migration at Paraná River, interrupted by a hydroelectric construction. It was designed within this laudable environmental context, but undoubtedly, it also had sporting goals, as their use for the Slalom and Rafting in the World Nature Games, which occurred in 1997.

The initial project, which provided for sporting use, could not materialize at the time of the World Nature Games and therefore suffered some structural changes as well as conceptualization. In December 2002 the Park was tabled by the State of Paraná to Itaipu. In January 2006, the obstacles of the course were assigned with the aid of Foz do Iguassu City. Finally, in May of that year, the first Slalom competition occurred in the single Artificial Slalom Channel Latin America and with it, the Permanent Staff moved to the city of Foz do Iguassu. In September a correction of the inclination of the final section of the course was taken in order to reduce the decline of the course leaving it smoother in the end.

With 430 meters long , variable width between 8-25 meters, average depth of 1.20 meters and a maximum volume of 12 m³/sec , the site was chosen for the Slalom World Cup 2007 , which served as selective world for the Beijing Olympics , where 60 % (sixty percent) of the vacancies were defined . Several international athletes and coaches do not hesitate to point the Itaipu Canal as one of the top ten currently existing to practice canoe slalom.

Given their beauty arising from a natural environment to help maintain your trees and animals, it is a complex of unique kayaking in the world. In "Tupi-Guarani", the word Itaipu means "singing stone" and Piracema "the migration of fish from the upper river".

2014 R4 RAFTING WORLD CHAMPIONSHIP

Itaipu Hydroelectric

The Itaipu Hydroelectric Plant is the world's largest operation. Being a binational company developed jointly by Brazil and Paraguay on the Paraná River. The force generated at the plant is 14,000 MW (megawatts), with 20 generating units of 700 MW each. The record production of 2000 was - 93.4 billion kilowatt-hours (kWh) - accounted for 95% of the electricity consumed by Paraguay and 24% of total demand Brazil.



The construction of Itaipu is the result of intense negotiations between the two countries happened in the 60s. On June 22, 1966, the Ministers of International Relations of Brazil, Juracy Magalhães, and Paraguay, Pastor de Sapena, signed the "Act Iguazu", "a joint decision that declared the intention of studying the development of water resources in the condominium belonging to both countries, in the Paraná river" section and including the falls Seven Falls further down near the river "Iguassu ". In February of the following year, Brazilian and Paraguayan technical committees created and implemented the "act of Iguassu" this partnership related studies and development of the Paraná River.

In 1970, the consortium formed by IECO (from United States of America) and ELC (from Italy) won the international burden studies and project feasibility. Work began in February 1971. On April 26, 1973 Brazil and Paraguay signed the Itaipu treaty, the legal framework for hydropower development of the Paraná River by both countries instrument. In May 1974, the entity Itaipu Binational (BI) was established to oversee the construction of the plant. The actual beginning of the work took place in January next year.

In more than 30 years, Itaipu Binational collects, in addition to posting the list of the seven wonders of the modern world by the American Association of Civil Engineers' (Asce) in 1995 in the magazine "Popular Mechanics", from United States, many prizes and mentions the recognition of their performance in the areas of communication and social, environment, human resources, social responsibility technique.



Information from the official website (www.itaipu.gov.br)

2014 R4 RAFTING WORLD CHAMPIONSHIP

Google Earth - Maps

Iguassu Falls

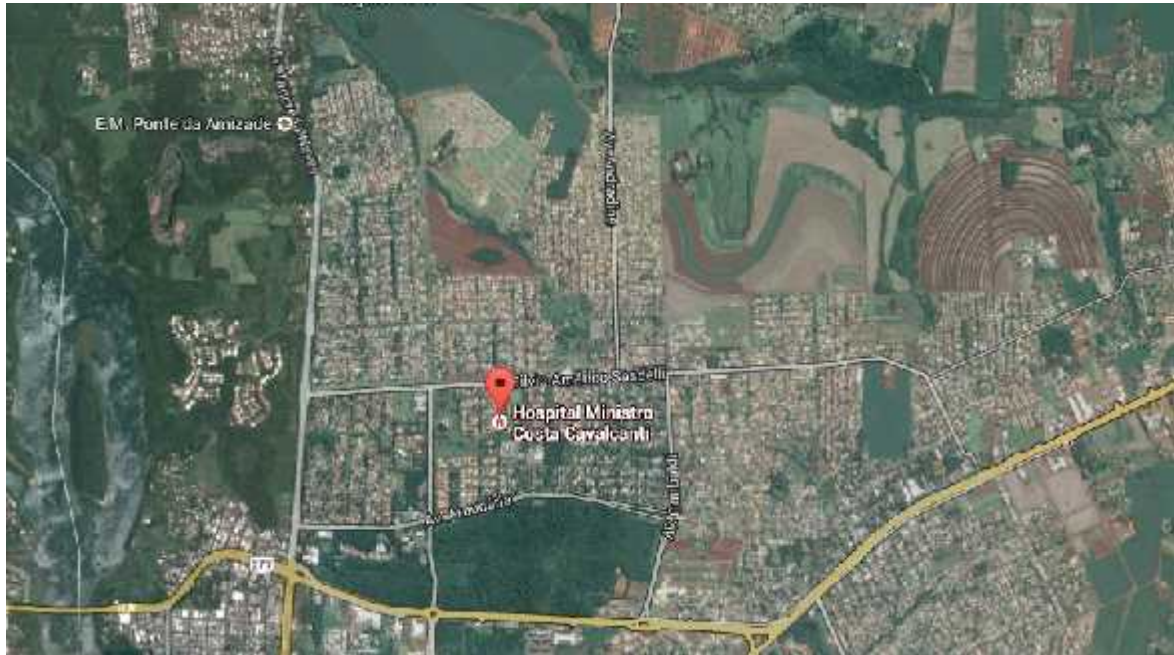


Itaipu Canal



2014 R4 RAFTING WORLD CHAMPIONSHIP

Minister Costa Cavalcanti Hospital



2014 R4 RAFTING

WORLD CHAMPIONSHIP

10. VISA INFORMATION

The website of the Ministry of Foreign Affairs of Brazil provides the general framework for Scheme Visas for Foreigners in Brazil Entry specifying nationalities who need and those who are exempted from visas to enter the country. The Framework is available at:

The Framework is available at:

<http://www.portalconsular.mre.gov.br/estrangeiros/quadro-geral-de-regime-de-vistos>.

2014 R4 RAFTING WORLD CHAMPIONSHIP

11. ACCOMMODATION, MEALS, LOCAL TRANSPORT, AIR TRANSPORT AND INSURANCE.

Accommodation

To facilitate the logistics of the event, especially on the issue of transportation, because we all know the difficulties of access to the local test (Itaipu and Iguassu National Park), the organization choose the central area of Foz do Iguassu hotels and restaurants to indicate good prices.

If the teams choose one of these hotels, they will be well served with supermarkets, drugstores, hospital, banks, restaurants that are very close, beyond the facility of daily transport to the training and competition place, because the bus stop it close to the hotels, as indicated below:

Hotels that are part of SHUTTLE buses for both the Iguassu National Park, and for Itaipu:



1) Foz do Iguassu Hotel www.hotelfozdoiguacu.com.br

This hotel is the hotel's base organization and coordination of the championships in 2014 and 2015 Value of apartments:

Single R\$ 148.00 Double R\$ 185.00 Triple R\$ 298.00.

2) Best Western Taroba Hotel www.hoteltarobafoz.com.br Value of apartments:

Single R\$ 117.95; Double R\$ 178.20.

2014 R4 RAFTING WORLD CHAMPIONSHIP

3) Mirante Hotel www.hotelmirantefoz.com.br

* Hotel Mirante is the starting point of the Shuttle bus for local proof. Single point!

Value of stand apartments:

Single R\$ 69.30; Double R\$ 99.00; Triple R\$ 128.70; Quadruple R\$ 163.80.

Value of luxury apartments:

Single R\$ 84.60; Double R\$ 119.80.

4) Faguile Hotel www.hotelfaguile.com.br Value of apartments:

Single R\$ 70.00; Double R\$ 125.00; Triple R\$ 160.00; Quadruple R\$ 200.00.

5) Del Rey Hotel www.hoteldelreyfoz.com.br Value of apartments:

Single R\$ 135.00; Double R\$ 190.00; Triple R\$ 215.00; Quadruple R\$ 245.00.

6) Águas do Iguaçu Hotel www.aguasdoiguacuhotel.com.br Value of apartments:

Single R\$ 139.00; Double R\$ 179.00; Triple R\$ 240.00.

RESTAURANTS RATE

(I) Churrascaria do Gaúcho = R\$ 23.50 (Monday to friday) R\$ 26.00 (Saturday and Sunday) www.churrascariadogaicho.com.br

(II) Restaurante Aroma do Tempero = R\$ 15.00

(III) Churrascaria Bufalo Branco = R\$ 35.00 www.bufalobranco.com.br

Transport Hotel/Course/Hotel

The entry of the athletes and crew in Itaipu and Iguassu National Park will be with the official vehicle of the event, not being allowed access to private or leased vehicle in the period 08th to 19th October. Before the start of official training will be able to access, duly authorized and accredited leased vehicles.

The starting point is shown in the drawing above, so that the organization asks teams to host in nearby hotels, facilitating logistics for all.

The organization also makes available an equipped gym, of less than an hundred meters from the selected hotels, with special price, during the event. Those interested should send request for days and times that physical training through gpkturismo@uol.com.br. With this email they will send the budgets.

Transport Airport/Hotel/Airport

Since the organization is informed at least 15 days from the time of arrival of the delegation in Foz do Iguacu, will be provided a van and a guide to accompany the team to their hotel. This service will also be available for return to the airport.

2014 R4 RAFTING **WORLD CHAMPIONSHIP**

Rental Vans and Vehicles - GPK INTERNATIONAL TOURISM

The GPK International Tourism, will be available for rental vans with capacity for 15 people, air conditioning, priced at R\$ 450.00 (four hundred and fifty real) per day, and a small car to 5 people from R \$ 119.00 (one hundred nineteen real).

If interested, the team should contact:

GPK Turismo

www.gpkturismo.com.br

suci.gpkturismo@uol.com.br, phone +55 42 32325042 contact Suci

gpkturismo@uol.com.br, phone +55 42 32325042 contact Angelita

gpkturismo@gpkturismo.com.br, phone +55 42 32325361 contact Brenda

Contact: Gilson Proença – (KIKO), phone +55 42 99378251 e-mail; gpkturismo@uol.com.br

Insurance and Medical Care Assistance

The Itaipu and Iguazu National Park require that all persons registered in the event are covered by life and hospital medical care insurance. The insurance will cover up to U.S. \$ 50,000.00 (fifty thousand real) for the case of accidental death or permanent disability and even \$ 3,000.00 (three thousand real) for medical and hospital expenses.

If the teams understand that the values are low for the requirements they shall hire other insurance for complementation. The organization of the event is liable for expenses only up to the insured limit.

If perhaps there is some accident the athlete will be referred to the Costa Cavalcanti Hospital where the organizers will commit to pay the costs up to the limit established above.

2014 R4 RAFTING **WORLD CHAMPIONSHIP**

12. CONTACT

Brazilian Canoe Confederation in Foz do Iguassu – PR

Address: Rua Pedro Basso, 700, Jardim Pólo Centro – Foz do Iguaçu-PR Phone number:
+55 45 3027 2052 / +55 45 9932 6662

Contact: Julierton

General e-mail event: foz2014@canoagem.org.br

Event website: www.foz2014.org.br

Office of the Brazilian Canoe Confederation in Curitiba-PR

Phone number: +55 41 3083 2600

2014 R4 RAFTING WORLD CHAMPIONSHIP

13. ORGANIZATION, SPONSORS, OFFICIAL AIRLINE AND SUPPORT

ORGANIZATION



SPONSORS



SUPPORT

